

MODEL: WFP9

***INSTALLATION & INSTRUCTION
MANUAL***

9,000 POUND

***TWO POST
FLOOR LIFT***

Whip Industries, Inc.

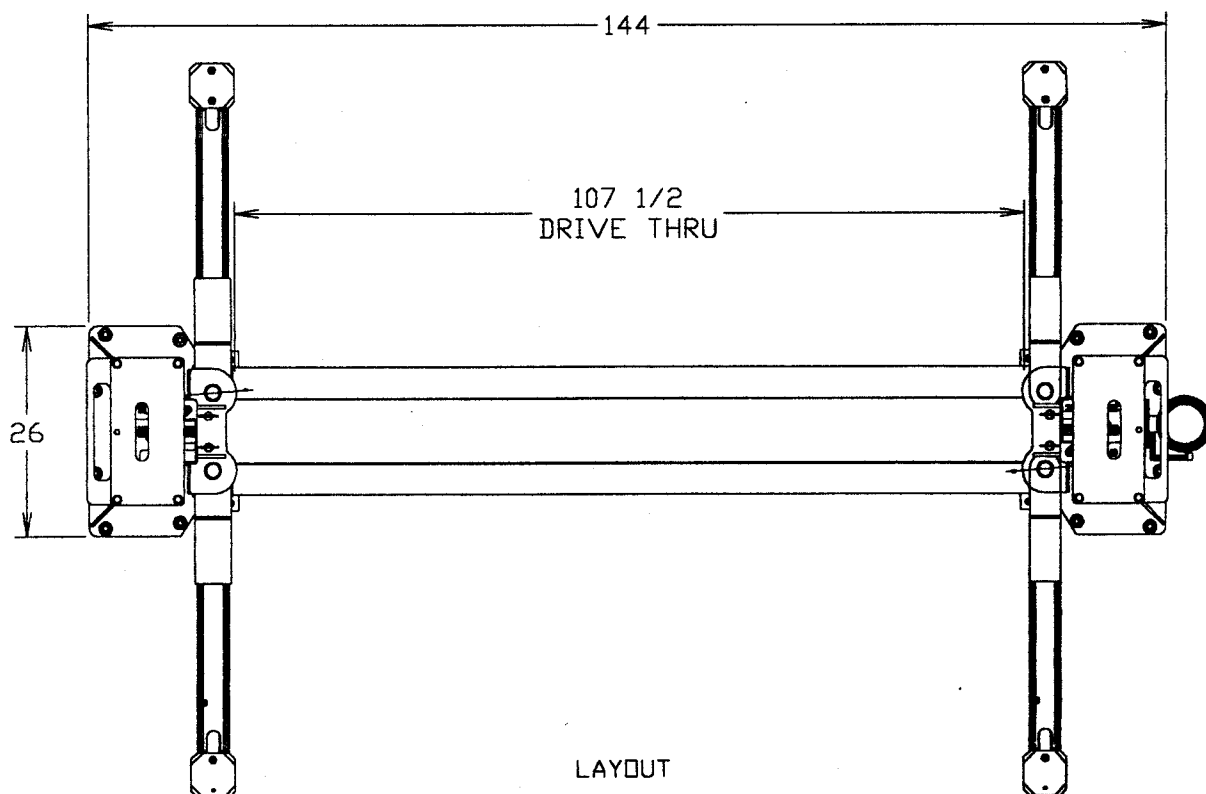
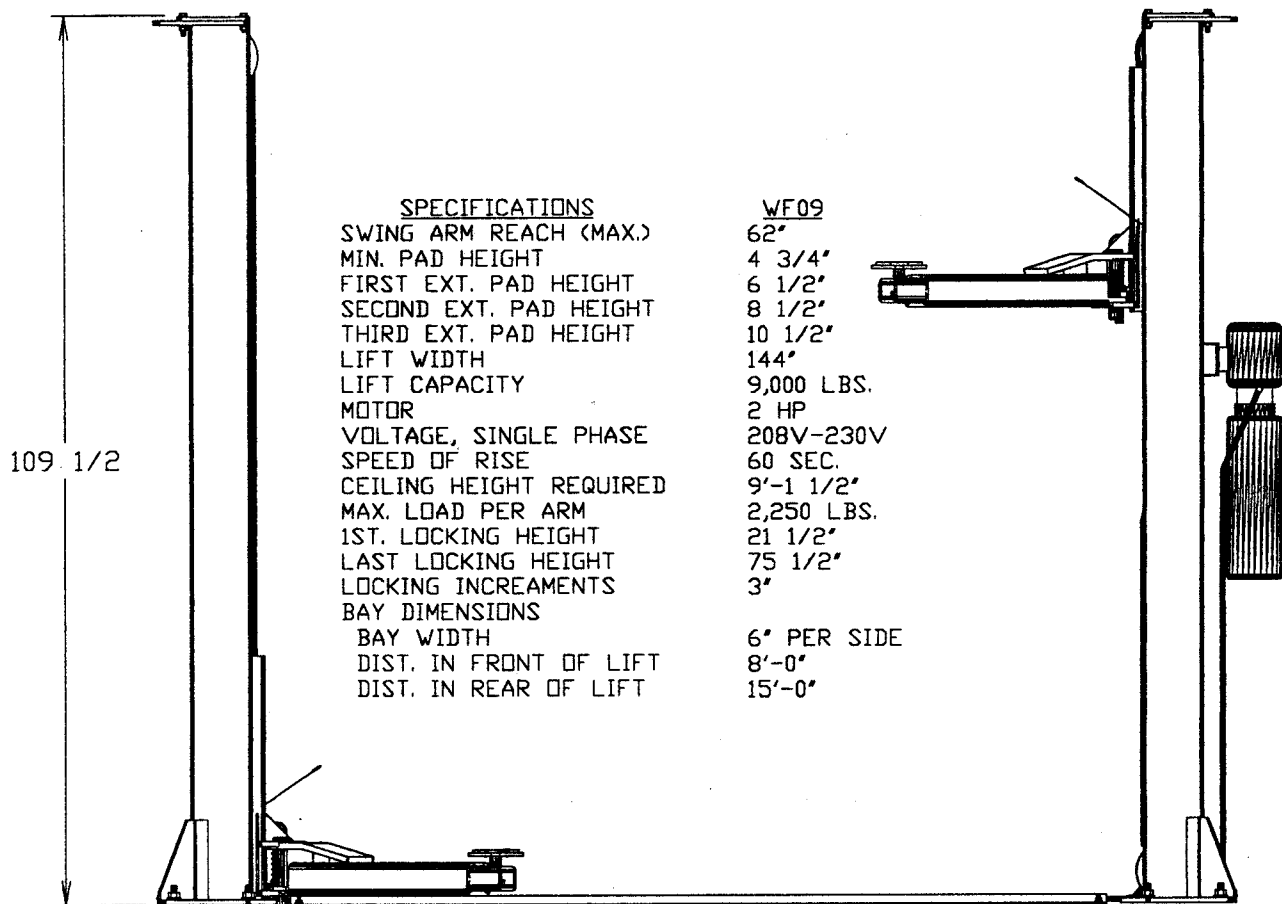
7711 Wyatt Dr.

Fort Worth Tx. 76108

Phone (817) 246-1088

Fax (817) 246-2898

LIFT SPECIFICATIONS FOR THE WFP9



LAYOUT

FIG #1

AUTOMOTIVE LIFT ASSY. ALIF-F209

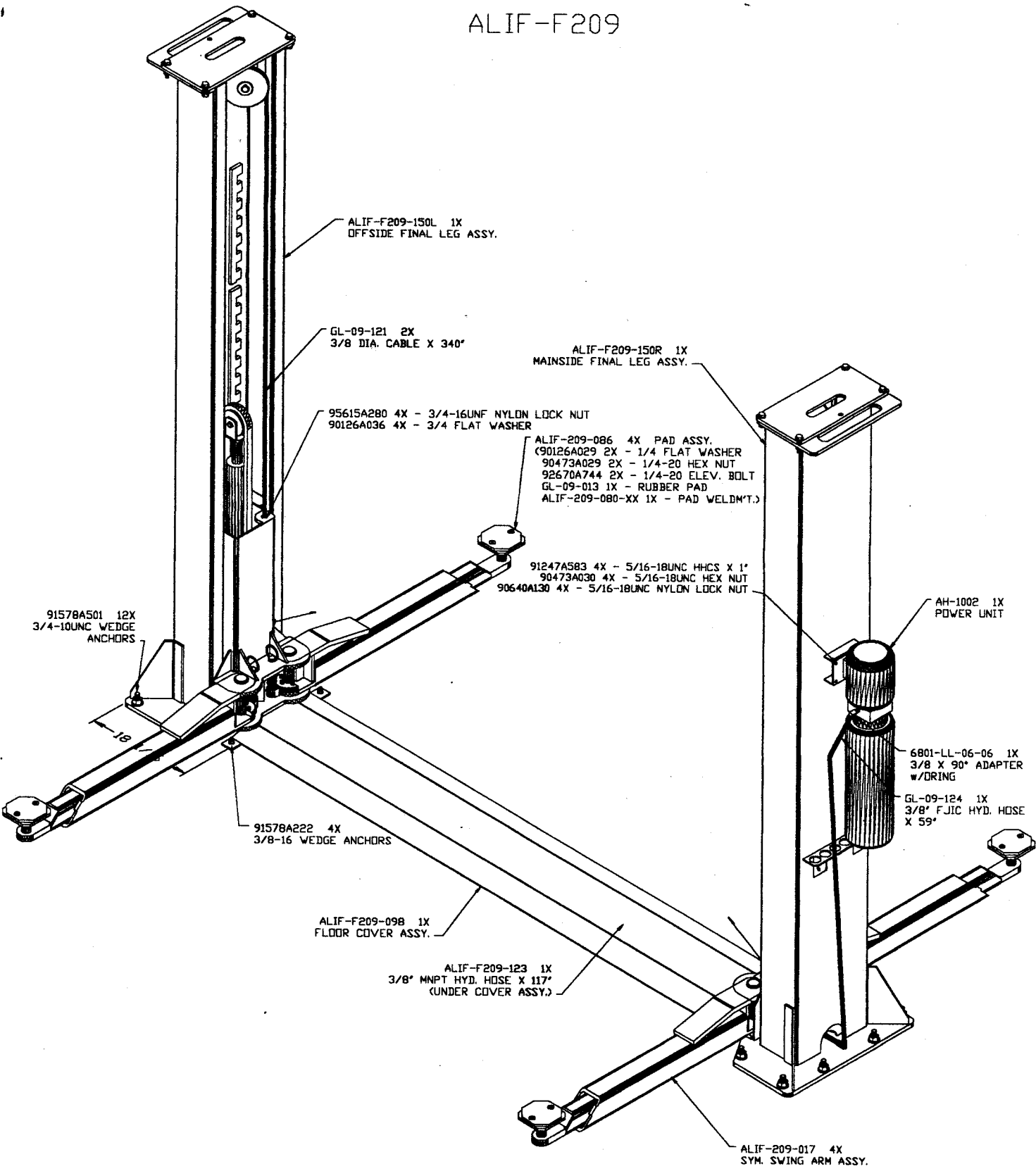
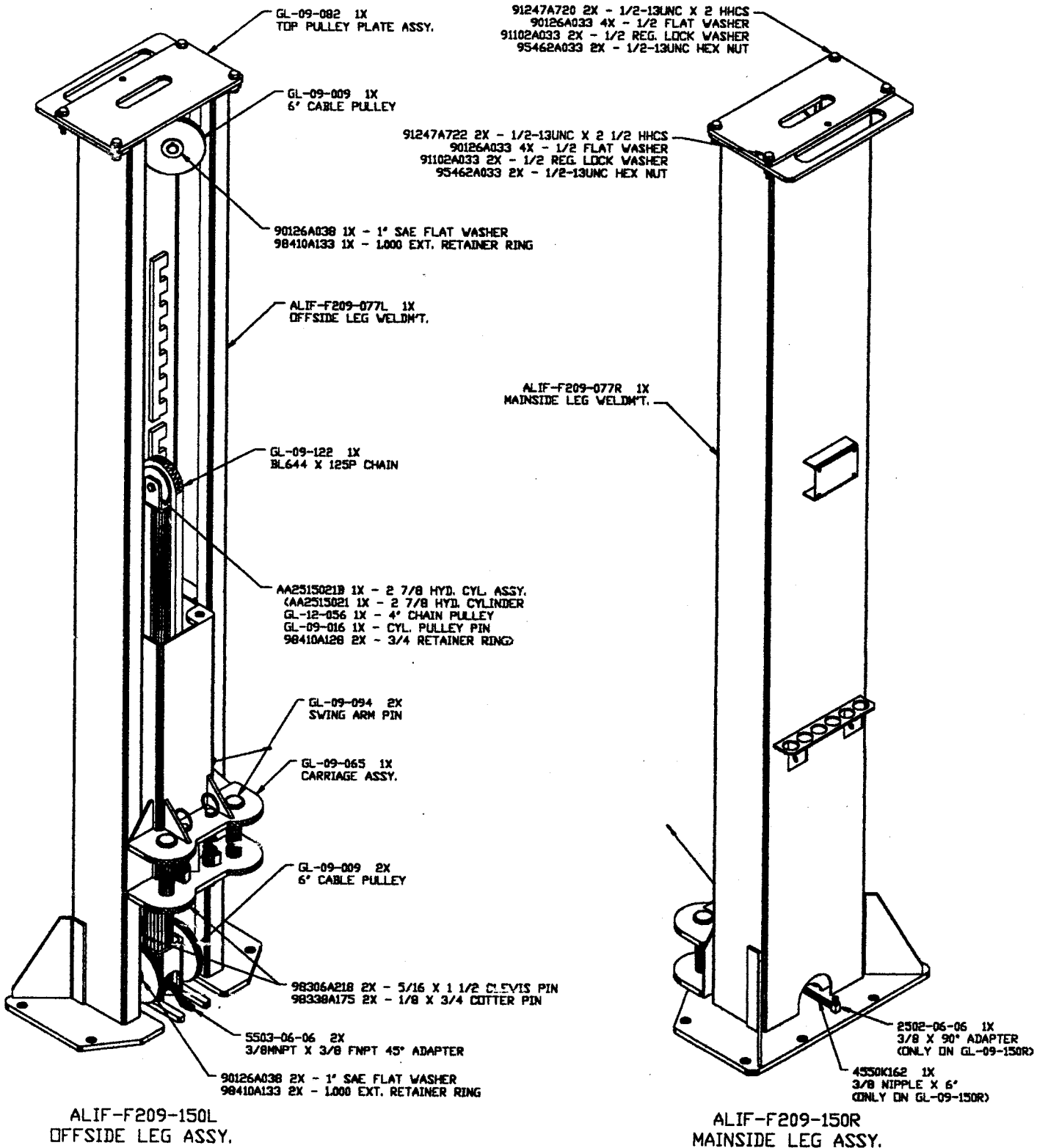


FIG. #2

LEG ASSEMBLIES



*** BOTH ALIF-F209-150L & ALIF-F209-150R ARE IDENTICAL
 WITH THE EXCEPTION NOTED.

FIG. #3